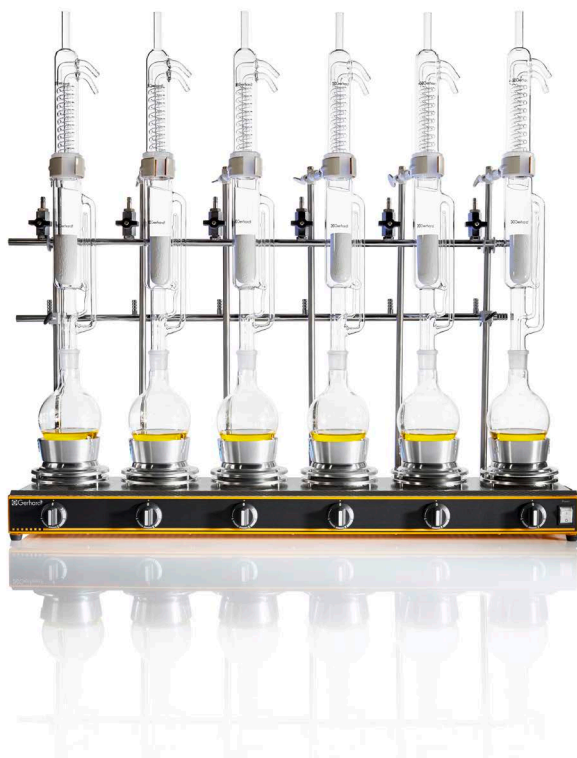


CLASSIC SOXHLET APPARATUS



Apparatus for classic, manual extraction using the Soxhlet method.

Tried and test C. Gerhardt quality for determining the fat content in food and feeds by means of solid/liquid extraction using an appropriate solvent.

Serial heating unit with 6 individually adjustable heaters. With interchangeable top moulds, airbath inserts, support rods and mains cable.

The cooling water supply system, Soxhlet glass parts and holders for fastening the glass parts to the support rods have to be ordered separately.

Scope of delivery Serial heating unit EV
Interchangeable top moulds
Airbath inserts
Support rods
Instruction manual

Order information

Order No.	Type	Description
10-0012*	EV6 AII/16	Extraction heating unit (Soxhlet), 6-place, 230 V, 50-60Hz
		Version 115 V
10-0209*	EV6 AII/16	Extraction heating unit (Soxhlet), 6-place, 115 V, 60 Hz

* Cooling water supply system, Soxhlet glass parts and holders for fastening the glass parts rods have to be ordered separately (see Accessories).

Technical data

Type	EV6 AII/16
Max. Temperature [°C]	425
Heating places	6
Size of flasks [ml]	250, 500
Dimensions W / D / H [mm]	900 / 225 / 650
Weight [kg]	14
Nominal voltage [V]	230, 115
Frequency [Hz]	50 - 60 ¹⁾
Nominal wattage [W]	2700

1) Version 115 V only 60 Hz

Accessories

Order No.	Type	Description
10-0054	H	Holder for Soxhlet glass parts
10-0060	K6	Cooling water feed pipe, 6-place, for extraction heating apparatus EV6 All/16
10-0061	SG2	Soxhlet glass set, 3 pieces, 500 ml, consisting of: 1 x 10-0068 Flat bottom flask 500 ml 1 x 10-0063 Coiled-tube condenser 1 x 10-0066 Extractor 150 ml
10-0062	SG1	Soxhlet glass set, 3 pieces, 250 ml, consisting of: 1 x 10-0069 Flat bottom flask 250 ml 1 x 10-0063 Coiled-tube condenser 1 x 10-0066 Extractor 150 ml
13-0054	SE33A	Extraction thimbles, 33 x 80 mm, 25 pcs.
10-0053	All	Interchangeable top mould, Ø 95 mm
10-0056	SPII	Airbath insert (cobweb), for interchangeable top mould All
10-0097	ST60	Support rod, 600 x 12 mm, VA, with screw feed
10-0100	ST100	Support rod, 1.000 x 12 mm, VA, with screw feed (alternative to ST60)
1000496		Silicone tubing 8 x 2 mm (Specify length when ordering)
1000486		Silicone tubing 12 x 2 mm (Specify length when ordering)

More accessories and consumables on request.

